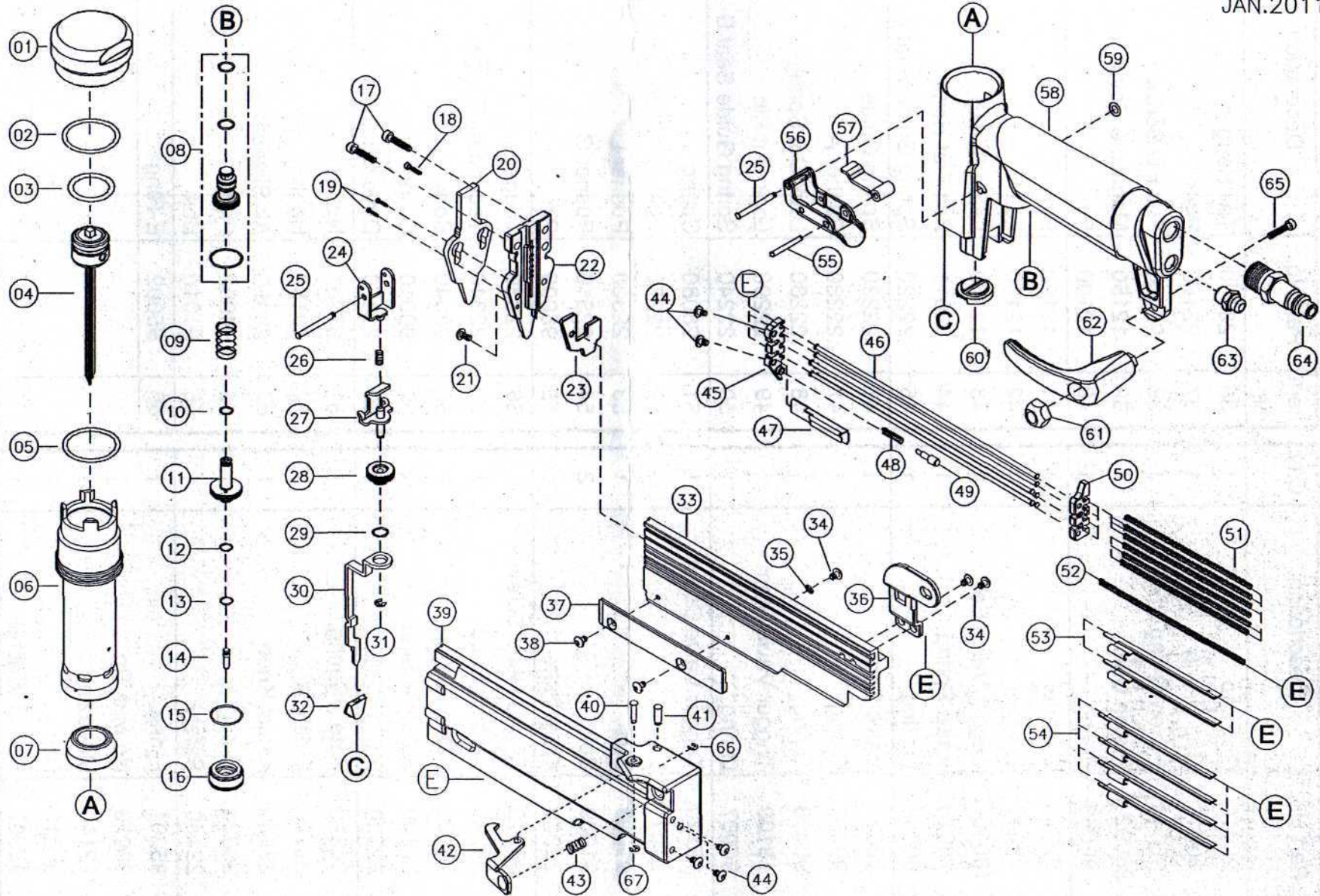


SUPER 635

JAN.2011



F013-4

[Safety System]

Parts List

Item No.	Part No.	Description	Q'ty	Item No.	Part No.	Description	Q'ty
1	28010	Top cap	1	36	28060	Tail Hanger	1
2	90015	Cap O-ring	1	37	22160	Plate	1
3	90049	Piston O-ring	1	38	93003	Flat HD.Screw	2
4	28092-1	Piston Unit	1	39	12150	Magazine Cover	1
5	90058	O-ring	1	40	12180	Pin	1
6	22030	Cylinder	1	41	12190	Pin	1
7	22040	Bumper	1	42	12160	Latch	1
8	18060-1	Trigger Valve Set	1	43	12170	Latch Spring	1
9	18070	Valve Spring	1	44	98011	Bolt Flat Head	5
10	90055	O-Ring	1	45	22220	Spring Guide Seat A	1
11	18081	Valve Seat	1	46	22230	Spring Guide	6
12	90005	O-ring	1	47	22260	Pusher A	1
13	90009	O-ring	1	48	22280	Lock Out Spring	1
14	18100	Trigger Valve Stem	1	49	22290	Lock Out Pin	1
15	90007	O-ring	1	50	22240	Spring Guide Seat B	1
16	18120	Trigger Valve Cover	1	51	28080	Spring	6
17	91007-1	Bolt	2	52	22270	Pusher Spring	1
18	91008	Bolt	1	53	22300	Pusher L	2
19	91009	Bolt	2	54	22310	Pusher C	4
20	22070	Front Plate	1	55	96005	Pin	1
21	98012	Round Head Screw	1	56	22330	Trigger	1
22	28020	Guiding Plate	1	57	22340	Secondary Trigger	1
23	22090	Safety Cover	1	58	28040	Body	1
24	22100	Safety A Seat	1	59	90010	O-ring	1
25	22320	Pin	2	60	22370	Drive Guider	1
26	20310	Safety Spring	1	61	97001	Nut	1
27	22120	Safety A	1	62	20180	Hook	1
28	22130	Adjust Knob	1	63	28050	Air Silencer	1
29	90024	O-ring	1	64	94002	Plug	1
30	22140	Safety	1	65	91010	Bolt	1
31	95001	E-ring	1	66	95002	E-Ring	2
32	28070	No Mar Tip	1				
33	12140	Magazine	1				
34	98010	Bolt	3				
35	92002	Spring Washer	1				

Super 635

01/05/2011